



# ResoBoard 4

## Product Information & Technical Data Sheet

Resonate ResoBoard 4 is a high performance acoustic wall lining board. The boards are suitable for timber stud, brick and concrete block walls and are effective in new build and refurbishment developments.

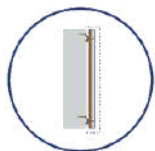
### Slimline Wall Soundproofing

At just 30mm thick, ResoBoard 4 wall boards represent a slim, space saving solution for highly effective wall soundproofing. This provides a significant benefit against alternative solutions that require separate independent wall linings (100mm - 150mm thickness).

The boards are directly fixed to the existing wall, making them easy to install with minimal disruption to the home owner.

The composition of ResoBoard 4 is the perfect combination of materials to improve absorption, mass and vibration damping. The surface face is 15mm paper faced HD plasterboard, technically bonded with 10kg/m<sup>2</sup> mass loaded vinyl, and a 9mm cross linked polyethylene foam and a further layer of 5kg/m<sup>2</sup> mass loaded vinyl.

### Key Benefits



Low space impact on existing wall (30mm)



Effective airborne noise reduction for sounds such as talking and television

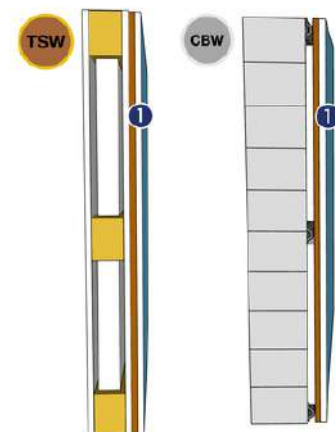


Paper face, for easy plaster finish



### System Components

#### Separating Wall Options



### Dimensions

|                            |   |
|----------------------------|---|
| <b>Board Dimensions</b>    | 1200mm (Width)<br>1200mm (Length)<br>30mm (Thickness) |
| <b>Board m<sup>2</sup></b> | 1.44m <sup>2</sup> per board                          |
| <b>Boards Per Pallet</b>   | 25 Boards / 36m <sup>2</sup>                          |
| <b>Board Weight</b>        | 28.5 kg/m <sup>2</sup><br>41 kg Per Board             |
| <b>Pallet Dimensions</b>   | 1200mm (w)<br>1200mm (L)<br>900mm (H)                 |
| <b>Pallet Weight</b>       | 1000 kg   |

## Product Applications and Typical Acoustic Performances

### Timber Stud Wall

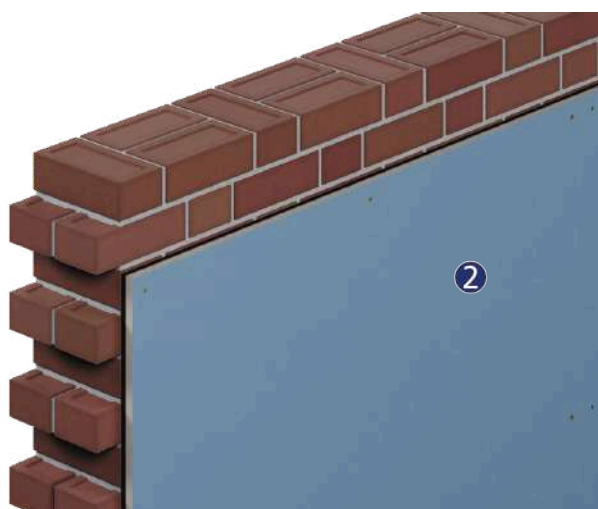


1. Timber stud partition
2. ResoBoard 4

|                               |      |
|-------------------------------|------|
| Airborne Sound Performance Rw | 52dB |
|-------------------------------|------|

*Directly fixed to timber or metal stud partition*

### Concrete Block Wall



1. Masonry Wall
2. ResoBoard 4

|                               |      |
|-------------------------------|------|
| Airborne Sound Performance Rw | 54dB |
|-------------------------------|------|

*Directly fixed to existing masonry wall*